

# Turtle Tales

THE NEWSLETTER OF TURTLE LAKE ELEMENTARY SCHOOL No. 3, 09-10

## CALENDAR

### October 19-October 23

#### Monday, October 19

7:45 a.m. 5th Grade Orchestra

#### Tuesday, October 20

7:45 a.m. 4th Grade Orchestra

7:45 a.m. African Music Ensemble

9:00 a.m.-12:00 p.m. Grade 5 Maud Hart Lovelace

#### Wednesday, October 21

7:45 a.m. 5th Grade Band

7:45 a.m. 4th Grade Choir

9:00 a.m.-2:30 p.m. 4th Grade Kindness Retreat, Gyms A&B

8:50 a.m.-3:00 p.m. 5th Grade Nature Center, (Kjellberg, Vanderport)

#### Thursday, October 22

Special Ed Swimming

Rescreen Vision and Hearing, TH

8:50 a.m.-3:00 p.m. 5th Grade Nature Center, (Coyle, Morse)

6:30-8:00 p.m. 2nd Grade Social, Bingo

#### Friday, October 23

7:45 a.m. Chess Club, TH

8:50 a.m.-3:00 p.m. 5th Grade Nature Center, (Desmond, Kellermann)



## THEME OF THE WEEK

**Demonstrate your positive personal power towards others by being courteous.**

- Pay attention to the needs of other people rather than thinking of yourself first.
- Respect other people's property.
- Look for ways to be courteous even when you are in a hurry.

## QUOTE OF THE WEEK

*"Most smiles are started by another smile."*



## Principal Perspectives

by Craig Sundberg

Darin Johnson and I took time last Friday to take a minute and just reflect with our staff the accomplishments thus far in our 09-10 school year. It is quite amazing to look at all we have done, initiatives started, curriculum changes, opportunities for our students, etc. As parents and partners in our school community, you share with us in so many of our activities and undertakings. Thank you for your support and involvement. We could not have done much of this without you!

- Implementation of Developmental Spelling
- Special Ed Model in place and functioning very well
- Implementation of Spanish (fourth and fifth grade)
- Lit/PE (Steve Middleton-Koller presented overview at last PTA meeting)
- System 44 (Reading intervention program)
- ABC Meeting Format (newly designed staff meeting format)
- New SMART Boards and LCD projectors
- Many new grade level teams and staff members
- Turtle Lake Staff Math Club
- Facility is in phenomenal shape
- Sowah Mensah Residency
- Art displays in hallway
- New and improved Unit Studies Design
- Record numbers at first PTA meeting (Way to go PTA!)
- Discussion around Common and Formative Assessment
- A Positive SEE report (School energy saving promotion)
- National Board Certified Candidates (Julie Reimer, Nancy Kellermann, and Simone Haugen)
- LRT's in place (8 fantastic Learning Resource Teachers assisting primarily in reading and math)
- Site Plan for CRT (Collaborative Resource Time for our staff to plan)
- Fall MAP and AIMSweb assessments are completed, underway or scheduled
- Turtle Tales is online
- Strong BILT, BOC and TECH committee leadership
- Teacher Professional Development (Foundation courses, Thinking Math, MV Certification)
- Front Office Staff is in a groove
- Choir sang at Twins' game (Way to go Mrs. Crockett and choirs)
- Staff in district leadership positions who are tremendous resources
- Meeting or exceeding school goals in areas of both reading and math proficiency

I'm sure more could have been added to this list, but what a great start to our school year!

# CALENDAR

October 26-October 30

**Monday, October 26**

7:45 a.m. 5th Grade Orchestra  
7:00 p.m. PTA Meeting, TH

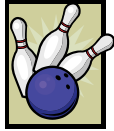


**Tuesday, October 27**

7:45 a.m. 4th Grade Orchestra  
7:45 a.m. African Music Ensemble

**Wednesday, October 28**

7:45 a.m. 5th Grade Band  
7:45 a.m. 4th Grade Choir



**Thursday, October 29**

**Hearing & Vision Rescreen**

7:45 a.m. 5th Grade Choir  
Special Ed Bowling!  
7:00 p.m. 4th & 5th Grade Parent  
Math Night, TH

**Friday, October 30**

7:45 a.m. Chess Club, Turtle Hall  
12:00—3:00 p.m. 5th Grade Party,  
Bowling



## THEME OF THE WEEK

**The Three C's--  
Compassion, Caring  
and Courage help us  
all to learn more and  
do our best.**



- There are times in life, when no matter how hard we try to solve problems on our own, we need to ask for help.
- If you are being harmed, you need to get help.
- Talk to your teacher about other times when it's appropriate to ask for help.

## QUOTE OF THE WEEK

*"Make an effort every day to feel good about who you are and what you can be."*



## Picture Retakes/Group Pictures

Picture retakes have been scheduled for Thursday, November 6th. Pictures will be taken of new students, students who were absent on picture day and retakes (please return the entire packet). Group pictures of orchestra, band, and bus patrols will also be taken at this time and can be ordered for \$6 each. Order envelopes will be distributed soon.



## THANK YOU, THANK YOU, THANK YOU!

Thank you to all the volunteers who helped on picture day and during vision and hearing! Our wonderful volunteers assisted over 900 students smile perfectly during pictures, and did vision and hearing screening with almost 650 students! Thanks for all your help. We couldn't do it without you!



## VOLUNTEERS NEEDED

Students in Grade 4 will be participating in a Kindness Retreat on Wednesday, October 21st at Turtle Lake. We are in need of volunteers to make the day a success! Volunteers are needed from 8:30am - 2:30pm. For more information and to volunteer, please contact Marta McIntyre at [marta.mcintyre@moundsvIEWSchools.org](mailto:marta.mcintyre@moundsvIEWSchools.org) or 651.621.7716.



## Halloween Candy Collection

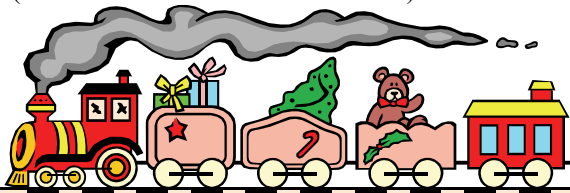
Trick or Treat on Halloween and then bring your extra candy to school! Again this year, we will be collecting Halloween candy which will be donated to various charitable organizations. Watch for more information to come home soon regarding our candy collection days.



## Gifts For Others

### 2009 Turtle Lake Holiday Giving Program

For the last several years, the Turtle Lake PTA has generously sponsored a Gifts For Others Holiday Program (GFO). GFO is designed to support families within the Turtle Lake community who are experiencing extreme financial stress during the holiday season. The program provides families with clothing items and some special gift requests. If you feel that your family would benefit from this program, please call Tim Howard (Turtle Lake School Social Worker) at 651-621-7715.



## ABOUT OUR SCHOOL

### Respect, Responsibility, and the Right to Learn!

#### Turtle Lake Elementary School

1141 Lepak Court  
Shoreview, MN 55126  
Craig Sundberg, Principal  
Darin Johnson, Student Services  
Assistant

#### School Hours

School day begins at 8:50 a.m.  
Students enter building at 8:35 a.m.  
Kdgn a.m. session: 8:50-11:30 a.m.  
Kdgn p.m. session: 12:40-3:20 p.m.  
School dismisses at 3:20 p.m.  
Early release days dismiss at 11:50 a.m.

#### Office Hours

8:00 a.m.-4:00 p.m.

#### Important Phone Numbers

Office.....651-621-7700  
FAX.....651-621-7705  
Voicemail.....651-621-6100  
Attendance.....651-621-7701

#### E-Mail

firstname.lastname@moundsvIEWSchools.org

#### District Website

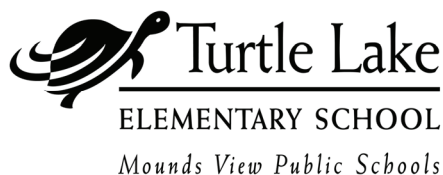
www.moundsvIEWSchools.org

#### Turtle Lake Website

www.moundsvIEWSchools.org/turtlelake

## ABOUT OUR SCHOOL

*Turtle Tales* is published semimonthly.  
Past volumes are available for your reading  
and printing on our school's website:  
www.moundsvIEWSchools.org/turtlelake.  
Copy deadline for issue No. 4 '09-'10  
.....Monday, October 26  
Publication date for issue No. 4 '09-'10  
.....Friday, October 30  
Items for submission may be e-mailed to  
Sandra.Solheim@moundsvIEWSchools.org  
or brought to the office.



## Product Collection News

Thank you to the hundreds of students who participated in this year's Summertime Challenge and brought in thousands of box tops, Campbell's labels, and milk caps that they had collected over the summer. The 20 students listed below brought in the most items this year and are the winners of this year's Summertime Challenge. Congratulations to these lucky kids!

Henry Boyer, Lisa Wright, Audrey Jackson, Grace Farmer, Kyle Machalec, Zack Schulte, Mikayla Gritzmaker, Alex Smith, Nolen Pedersen, Grace Hedger, JT Nelson, Lizzy Glasser, Anders Bandt, Michael Sims, Matthew Kubiak, Reilly Stokes, Kellen Carlson, Emily Walberg, Mackenzie Sear, and John Roth.

Remember classroom challenges begin in October. Be sure to bring in your box tops, Campbell's labels, milk caps, ink jet cartridges, and cell phones for your classroom!

#### Summertime Challenge Totals

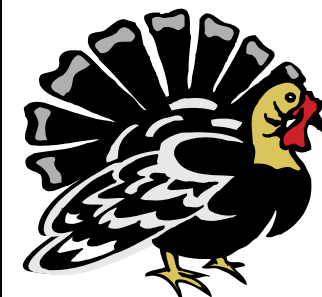
Campbell's Labels for Education 5,409  
General Mills Box Tops for Education 9,703  
Kemps Nickels for Schools Milk Caps and carton labels 4,054  
Kemps - other 280  
Land O' Lakes Milk Caps 357  
Ink Jet Cartridges 245  
Tyson Project A+ Panels 61  
Cell Phones 15  
Other 18

Total Product Collection 20,142

115 Students participated



## Announcing: October and November's Classroom Challenge



It is time to start bringing in those General Mill's box tops, Campbell's labels, ink jet cartridges, milk caps, and Tyson UPCs again. The classroom that collects the most items will be awarded a Thanksgiving pizza feast, plus \$50.00 to be used towards classroom supplies. Simply bring in your product requirements and place them in your classroom's bucket. We will be adding them up and announcing a winner on Friday, November 13th.

Good Luck to Everyone!



## WORD OF THE WEEK

# Word of the Week

## Week of October 19th: Vintage

**Definition** –high quality or well made, especially things from the past

**Book:** *A Foot in the Mouth: Poems to Speak, Sing and Shout/ Poem Title: "The Poems I Like Best"*

**Author/Illustrator:**  
Paul B. Janeczko/Chris Raschka

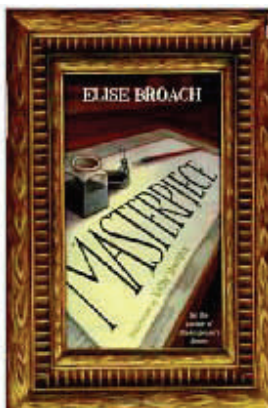


## Week of October 26th: Unwavering

**Definition** –firm, strong, and definite

**Book:** *Masterpiece*

**Author/Illustrator:** Elise Broach



## Family Reading Night

Turtle Lake's first Family Reading Night was a great success! Almost 100 parents and children gathered in Turtle Hall on Monday, October 5<sup>th</sup>, and they delightedly listened to author and illustrator David LaRochelle as he told stories and created the illustrations as he spoke. One story involved audience participation, and every time David asked for input, the speaker's answer was integrated into the story. The king, for example, just happened to love chicken, and he got the most help from his favorite cook. The second story was part of a manuscript David has sent to numerous publishers, and it was about a girl with very long, strong hair. The audience loved the storytelling experience.

The rest of the evening was spent listening to the story *Duck! Rabbit!* by Amy Krouse Rosenthal, read by Shoreview's Ramsey County children's librarian, Angie Miller. Ms. Miller also talked about the programs available at the library and encouraged families to visit often. Participants then moved to one of five classrooms where they continued the reading experiences. Ms. Miller read poetry with them, Mrs. Murray (one of the school's kindergarten specialists) read turtle books, Mrs. Nara (our art teacher) read family books, Ms. Middleton-Koller helped readers perform readers' theatre scripts, and Mrs. Reimer taught them how to create snake-like books. The evening was a fabulous way to promote literacy!



## Art News

This art will be on display in the hallways for the rest of October:

The photos of the outdoor sculptures by 5th graders in Mrs. Coyle's homeroom are on display in the hallway north of Turtle Hall. Many of the other photos of outdoor sculptures will be on display soon.

Pastel landscape drawings by 5th graders in Mrs. Desmond's homeroom will be on display soon.

Second grade created collages of people in action. Students in Mrs. Stimpson's, Mrs. Kristyniak's, and Ms. Roberts homerooms created the work that is on display.

First graders explored the elements of shape and texture. The work of students in Mrs. Thomsen's class is on display near the gym.

Third and Fourth grade, your turn will be after the next unit. You will take your clay tiles home when they are finished.

For more information on what is happening in art class, check out Mrs. Nara's page on the Turtle Lake website.



## SECOND GRADE FAMILY BINGO NIGHT



**When:** Thursday, October 22, 2009  
6:30-8:00 p.m.

**Where:** Turtle Hall

All **2nd grade** students and their families are welcome to join us for an exciting evening of bingo! Win some neat prizes, have a snack, and enjoy this fun evening with your friends! **The sign up form is due by October 14.**

If you have any questions, please contact Megan McGough at 651-490-9762 or [meganmcgough@comcast.net](mailto:meganmcgough@comcast.net) or Sally Gilcrest at 651-765-1737. This event is sponsored by the PTA.

### UPCOMING DATES TO NOTE

**Thursday, October 15 &  
Friday, October 16**

No School—Teacher's Convention

**Friday, November 6**

Early Release 11:50

**No PM Kindergarten**

**Friday, November 20**

Kindergarten Conferences

**No School for Kindergarten**

**Monday, November 23 &**

**Tuesday, November 24**

No School For All—Conferences

**Wednesday, November 25**

No School—Curriculum Day

**Thursday, November 26 &**

**Friday, November 27**

No School—Thanksgiving Break



## Math Night for Parents of 4<sup>th</sup> and 5<sup>th</sup> Graders

Does **lattice multiplication** make you feel boxed in?

Is your family **divided** over **partial quotients**?

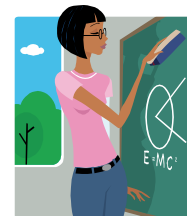
Mrs. Hunt, Mrs. Haugen, and Ms. Kellermann will be demonstrating the different addition, multiplication & division algorithms presented in the Everyday Math Curriculum.

**Date:** Thursday, October 29, 2009

**Time:** 7-8:30 pm

**Where:** Turtle Hall

Parents will have time to ask questions and practice **partial products, lattice multiplication, and division by partial quotients.**

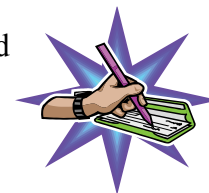


Sessions run in past years have been well attended and well received by parents. Parents feel they can better help their 4<sup>th</sup> or 5<sup>th</sup> grader at home.

**Don't forget your sharpened pencil  
(with eraser, of course!)**

## PTA Fundraising Update

Thanks to everyone who has taken part in the Innisbrook Fundraiser this year. Orders were due by October 14, and the totals will be reported in the next edition of Turtle Tales.



**Don't miss your chance to contribute to the PTA's  
Direct Drive Fundraiser!**

The Direct Drive provides an opportunity for you to contribute to the PTA through a tax-deductible donation. 100% of your donation to the Direct Drive will be used to fund the many and varied PTA programs that support our children and our school. Please make sure to check with your employer about matching gifts. And, remember, all families contributing to the Direct Drive will be entered in a drawing to win free prizes.

### TURTLE LAKE DIRECT DRIVE CONTRIBUTION FORM

Make checks payable to: Turtle Lake PTA

Return by: December 18, 2009

Parent/ Guardian: \_\_\_\_\_

Phone: \_\_\_\_\_

Student Name(s): \_\_\_\_\_

Grade(s): \_\_\_\_\_

Teacher(s): \_\_\_\_\_

Amount: \_\_\_\_\_

**THANK YOU FOR YOUR SUPPORT!!!!**

## LOST & FOUND

It's only October and our Lost & Found is filling up fast! Please take a few minutes to inventory your child's belongings and check for any lost items. The lost & found is located outside of the Science Room 206.

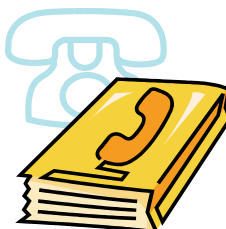
All items not claimed by Monday, November 30th will be donated to charity.



## DIRECTORIES

The Turtle Lake Directory is complete and on its way to the printers. We plan to distribute the directories in early November. If you did not order a copy and would still like one, please call Carol Jauch at 651-486-8437 or e-mail at [cjauch@aol.com](mailto:cjauch@aol.com).

There are order forms available in the Turtle Lake office.



## JOIN THE PTA

We are always welcoming PTA members. If you have not yet joined and wish to do so, please complete a Turtle Lake PTA Membership Enrollment form (available in the Turtle Lake Office) along with a check for \$6 made payable to the Turtle Lake PTA.



## HALLOWEEN COSTUMES

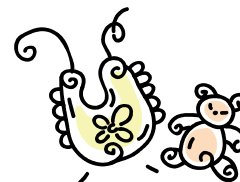
Please be aware that students are not allowed to wear or bring any items for their costumes that are of a violent nature. This includes anything that could be construed as a weapon.

## Kidzklozet

As we all know, times are tough for many people in our own community. There are families that have challenges in their lives that leave them in need of daily essentials. In order to give support to families in our community, Turtle Lake School will be collecting new and gently used children's clothes for Kidz Klozet. Kidz Klozet is a store founded by two Turtle Lake parents to provide FREE clothes to children in need. It is located in NE Minneapolis. Check out the website at [www.kidzklozetmn.org](http://www.kidzklozetmn.org).

Items specifically needed:

- Coats, snow pants, boots, hats and mittens
- Clothing, shoes underwear and socks
- NEW personal care items (soaps, shampoo, toothpaste, etc.)
- Diapers and diaper bags.
- Financial contributions (100% of the contributions go to the store to purchase items for storage, displays or specific family needs)



Items not accepted: furniture, toys, car seats and baby equipment.

We respectfully ask that all items be new or gently used, clean and in good repair. If we would not wear an item, we do not expect our guests to do so either.

Please contact Cyndi Klum (612-730-1968) at [cyndiklum@yahoo.com](mailto:cyndiklum@yahoo.com) or Kelly Carlson (612-202-1761) at [jkclod@aol.com](mailto:jkclod@aol.com) if you have any questions or would like to volunteer.

## Pass-It-Along

### What?

Pass-It-Along is a FREE event sponsored by the ECFE Parent Advisory Committee. Donations are sorted and passed on to families in need in the community.

### Donations?

The committee accepts clean, gently used:

- Infant and toddler clothing
- Baby blankets, equipment
- Toys
- Books
- Children's clothing up to size 16
- Maternity clothing
- Grocery bags with handles

### Where?

Pike Lake Education Center

### When?

Tuesday, October 20 9 a.m. to 12 noon

### Volunteers Needed!

Volunteers needed to help sort donations or help with childcare the mornings of October 13-19.

We also need help on October 20 to assist families with their selections and to clean up.

FREE childcare available as you help.

**Questions or to Volunteer:**

**Call 651-621-7420.**



## BOTTLE CAPS

Thank you for your interest and continued participation in the Recycle Caps with Aveda program! Continue to collect your caps and bring them to the collection box by the office!

The program debuted in September 2008. The decision to partner with schools on this ground-breaking effort was founded on the idea of helping raise awareness of the growing amount of plastics polluting our oceans while educating children on the importance of recycling and caring for our Earth and all of its inhabitants. Your participation in this program is making a very big difference.

**Program by the Numbers:**  
**130,000 pounds of plastic caps collected as of September 2009**

**700 schools officially enrolled in this program as of September 2009**

For more information on the Recycle Caps with Aveda program, please visit [www.aveda.com/caps](http://www.aveda.com/caps).

## RECESS REMINDER



### Dress for the Weather!

With the early snow-fall, it is important to remember that our students do go outside for recess every day. Exceptions are rainy/wet days, days when the wind chill index is lower than -10 degrees F or days when the temperature is less than 0 degrees F. Please be sure your child is dressed for the weather.

It is also important that children have snow pants and boots, jackets with zippers that they can zip themselves and gloves that they can put on themselves in order that the staff on the playground can best spend their time supervising the students and assuring their safety.



## Keeping our Students Healthy: H1N1 Flu and Your Child

As a new school year begins, our goal is to maintain a healthy atmosphere for student learning at Turtle Lake. Turtle Lake will likely remain open this year even if we experience an increase in student or staff absences, especially those related to a flu-like illness. Working together, we can also help slow the surge of flu-like illnesses among students by following these preventive steps:

As always, if your child is ill, please keep them home for at least **24 hours** after the 100 degree fever is gone (without the use of fever-reducing medicine).

Please report all flu-like illnesses to the **Turtle Lake Health Office**. Parents should continue to report all student absences to the Turtle Lake Attendance Line (651.621.7701). The Attendance Line message will also ask parents to call the school Health Office (651.621.7704) when a child has a flu-like illness, such as having a fever of 100 degrees or higher, a cough or sore throat, or other symptoms. The Health Office can work with families to help them make the best decision on returning students to school. Confidentiality will be kept for all families reporting illnesses.

We are teaching students preventive hygiene strategies such as frequent hand washing with soap and water and covering coughs and sneezes. Please reinforce these strategies at home as well.

### What if our School closed due to a significant outbreak of illness?

Schools could close at the direction of the state if student absences are significant. Schools could also close in the event that staff absences make it such that school operations would not be safe and supervision would be jeopardized. Yet our sub staffing gives us confidence that such closings are unlikely. If this occurred, a message would be sent to parents via the Mounds View Messaging Phone System and e-news services.

All families are asked to develop a plan in the event that students cannot return to school due to a school closing, including daycare plans for your child(ren). This would be helpful for any unexpected emergency situation as well.

Our staff is also working on a plan to provide homework in alternative formats. It will help maintain communication between home and school during extended student absences. Watch for more information from your child's teacher in October.

As mentioned earlier, we can slow the surge of flu-like illnesses if students stay home and rest when they have these symptoms. As a district, we want to avoid sending messages to students that may conflict with this philosophy. As a result, all perfect attendance programs will be suspended for the 2009-2010 year.

Thank you for your cooperation and support as we strive to prevent a surge of flu-like illnesses in our school during the upcoming year. More information about influenza and prevention strategies can be found at [www.moundsvIEWSchools.org](http://www.moundsvIEWSchools.org). All communications and procedures will continue to be supported from information provided by the Minnesota Department of Health and the Department of Education.

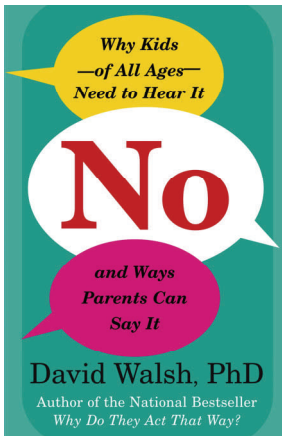


# Say YES to NO!

Learning how to say NO is critical for our children's success in school and life. With an average of 44.5 hours of screen time a week, kids are exposed to over one million YES messages a year. This barrage of YES messages undermines the character traits children need for success: self-reliance, perseverance, integrity and the ability to delay gratification. **What is Say YES to NO?**

**It's a book:** Psychologist David Walsh provides the antidote to discipline deficit disorder in his book **No, Why Kids of all Ages Need to Hear It and Ways Parents Can Say It**. The book provides down to earth advice that can be put into practice immediately and gives adults strategies to raise healthy, self-reliant kids.

**It's a conversation:** Join Mounds View Public School parent educator Jennifer Kukielka and other interested adults for support and to share stories in this class. Find out how NO is not just a one word answer, it's a parenting strategy.



## Class Info:

Thursdays, October 22-November 19

6:30-8:00 pm

Snail Lake Education Center, 350 Highway 96, Shoreview, Rm 114

Cost: \$25/5 sessions

Limited childcare at \$5/child for 5 sessions

Say YES to NO! #3137

Parent Name \_\_\_\_\_ Phone \_\_\_\_\_

I need childcare for \_\_\_\_\_ Birthdate \_\_\_\_\_

Cost: \$25/5 sessions. \$5/childcare. Make check payable to ISD 621.

Mail to ECFE office: 2101 14th St NW New Brighton, MN 55112

Questions? Call Early Childhood Family Education at 651-621-7420.

School Spirit days are the first Thursday of every month!

## Turtle Lake "School Spirit" Order Form

Students

Last Name:

First Name:

Teacher:

Phone:

Grade:

Parent's Name:

**Is this a secret gift order?**

Yes/ No (circle one) If yes, how may we best contact you?

**WEARABLES**

YOUTH: Youth sizing	S (6-8)	M (10-12)	L (14-16)	XL (18-20)	QTY	Unit Price	Total
Tie-Dye short sleeve "T"				n/a		\$10.00	
Tie-Dye long sleeve "T"				n/a		\$12.00	
Pink short sleeve "T"				n/a		\$6.00	
Royal Blue short sleeve "T"				n/a		\$6.00	
Black long sleeve "T"				n/a		\$12.00	
Royal Blue Crewneck Sweatshirt						\$17.00	
Royal Blue Zip Hooded Sweatshirt						\$22.00	
Royal Blue Hooded Sweatshirt						\$20.00	
Plaid Boxer Shorts				n/a		\$10.00	
Plaid Pajama Pants				n/a		\$16.00	
ADULT:	S	M	L	XL	QTY	Unit Price	Total
Blue short sleeve "T"						\$11.00	
Tie-Dye short sleeve "T"				n/a		\$14.00	
Pink short sleeve "T"						\$9.00	
Royal Blue short sleeve "T"						\$9.00	
Denim Shirt Mens						\$20.00	
Denim Shirt Womens						\$20.00	
Black long sleeve "T"						\$13.00	
Royal Blue Crewneck Sweatshirt						\$22.00	
Royal Blue Zip Hooded Sweatshirt						\$25.00	
Royal Blue Hooded Sweatshirt						\$23.00	
Grey Zip Hooded Sweatshirt						\$25.00	
Plaid Boxer Shorts				n/a		\$10.00	
Plaid Pajama Pants				n/a		\$17.00	
Other STUFF					QTY	Unit Price	Total
Water Bottle						\$3.00	
Pennant						\$3.00	
Sling Backpack						\$6.00	
Lanyard						\$3.00	

**Total**

\*Please make checks out to : Turtle Lake P.T.A.

**Please return order forms to the attention of PTA/School Spirit. If you have any questions, please call Brenda Cerkvenik - 651-484-6971 or Julie Durbin - 651-481-4913.**